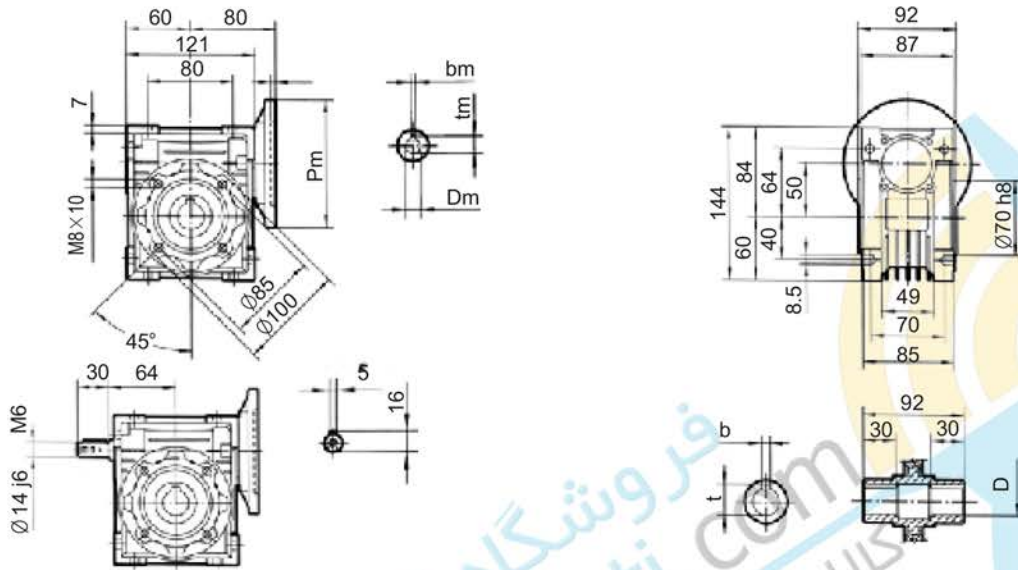
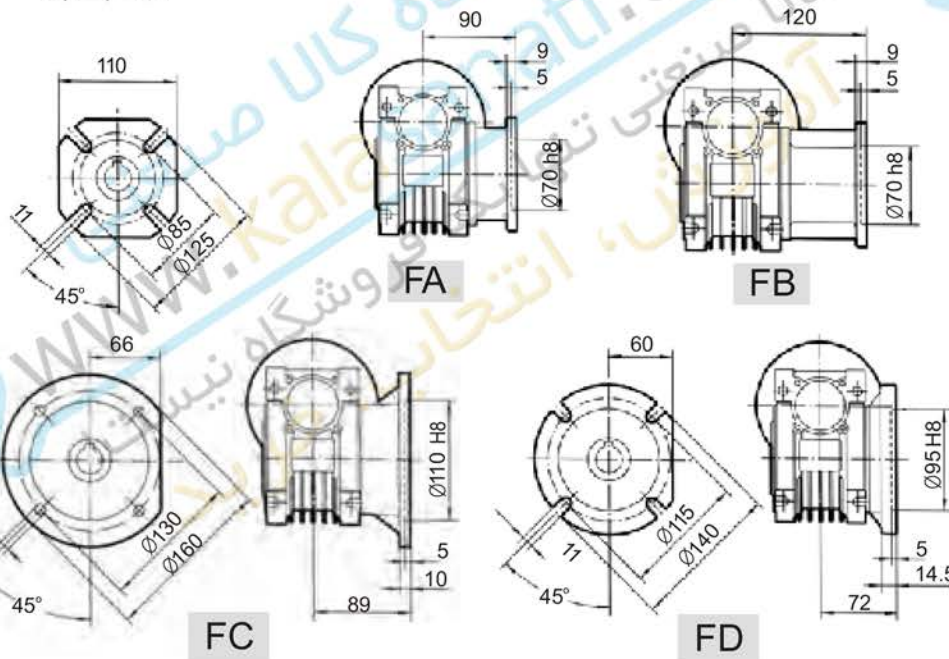


■ NMRV050

Weight without motor ≈ 3.5kg



F



PAM IEC	Pm	Dm E8	bm	tm	DH8	b	t
8085	200	19	6	21.8	25	8	28.3
71B5	160	14	5	16.3	24*	8*	27.3*
6385	140	11	4	12.8	*Only on request		
80B14	120	19	6	21.8			
71B14	105	14	5	16.3			